



 PLASSON®

SERIES 1 FITTINGS 2025

Milder

Veelzijdig in leidingsystemen

PLASSON Series 1

PLASSON Series 1 - The range of innovative fittings created by PLASSON, market leader in design and manufacture of reliable fittings for polyethylene pipe systems.

PLASSON Series 1 - Fittings provide dedicated solutions for connecting PE pipe to various other pipe materials, such as Copper, Polybutylene, PVC and PEX.

PLASSON Series 1 - Push fittings are designed to withstand 16 bar pressure rating. Inserting the pipe up to the fitting stop creates both the seal and the grip on the pipe.

PLASSON Series 1 - Compact and attractive design makes this fitting ideal for the plumbing market, where space is limited and appearance is crucial. Simplicity of assembly makes both the professional and occasional user's job easier while retaining the PLASSON reliability.

The combination of PLASSON's current fitting range and the new Series 1 fulfill the requirements of all markets for PE pipe connections and connections to other pipe materials.

PLASSON Series 1 features and benefits include:

- Aesthetically designed product - gives a professional finish to the job
- Assembly tools not required - simple push fit assembly
- Compact size - can be assembled in confined spaces
- Instant seal and integrity of joint - captive seal and no nuts to tighten
- Full end load performance - no need to restrain joints
- Transition from PE to internal plumbing systems - Copper, PB, PVC and PEX accommodated in one fitting
- 50 year design life - provides total reliability
- Tamper resistant design - ensures system integrity
- Reduced stock shelf space

Technical Specifications

Materials

Compression Fittings

Body: Polypropylene, high grade copolymer

Nut: High Grade Polypropylene

Split Ring and Grip Ring: Acetal (POM)

Liner: Acetal (POM)

Seal: Nitrile rubber (NBR)

Reinforcing Ring: Stainless steel on all female offtakes from 1 1/4" up to 2"

Threaded Fittings

Body: Polypropylene, high grade copolymer

Reinforcing Ring: Stainless steel

Brass Threads: CW617

Operating Temperatures

The fittings are not to be used with hot water, although they withstand the same temperature as the polyethylene pipe itself.

The fittings will withstand sub-zero temperatures.

Chemical Resistance

PLASSON fittings are supplied, as standard, with polyacetal split and grip rings and NBR seals which are suitable for water.

Operating Pressures and Quality Certificates

PLASSON fittings sizes 20-63 are tested and approved for water according to ISO 17885 (replaced 14236) to PN16.

Threads

Threads marked "R", "Rp" and "Rc" are according to ISO 7-1.

Threads marked "G" are according to ISO 228.

Legend

UB	Units per bag
UC	Units per carton
W	Weight in grams

The units per bag in this catalogue are the default figures, other figures might be applicable to certain markets.

Note

Before installation, ensure that the end of the pipe to be inserted into the fitting is free of scratches and other imperfections and that both the pipe and the fitting itself are free of sand, mud, stones, etc. If fittings are reused, ensure that split ring and grip ring teeth are sharp and bite into the pipe, to avoid pullouts. If uncertain, replace the split ring and grip ring.

Pull out resistance of PVC Adaptors and Universal Adaptors has been approved by pressure testing UPVC/PP pipe assemblies at 25 bar operating pressure for at least 1 hour.

Note: We strongly recommend the use of PTFE tape in threaded connections.

For diameters 40mm and above, chamfering and lubrication of the pipe end will ease insertion (use silicone lubricant).

PLASSON Series 1

100100

Page 204

Coupler



176100

Page 204

Universal Slip Repair Coupler



176100/1761Q0

Page 204

Slip Repair Coupler



101100

Page 205

Reducing Coupler



101200

Page 205

End Plug



100200

Page 206

Male Adaptor



100300

Page 206

Female Adaptor



1003G0

Page 207

Female Adaptor G Thread



1001C0

Page 207

Copper Pipe Adaptor



1002C7

Page 207

Copper Pipe Male Adaptor



1003C7

Page 208

Female Copper Adaptor



10017U

Page 208

Universal Adaptor



1001Q0

Page 208

PE to PVC Pipe Adaptor



1001QQ

Page 209

Coupling for PVC Pipe



1001M6

Page 209

Coupler Metric to Imperial (IPS)



10N200

Page 211

PA Male Adaptor



10N2G0

Page 211

PA Male G Adaptor



107200

Page 212

Male Adaptor with Threaded Brass Offtake



1072G0

Page 212 | Male Adaptor with Threaded Brass "G" Offtake



107300

Page 213 | Female Adaptor with Threaded Brass Offtake



1073G0

Page 213 | Female Adaptor with Threaded G* Brass Offtake



1073F0

Page 214 | Female Brass Free Nut Transition



100400

Page 214 | 90° Tee



103400

Page 215 | 90° Reducing Tee



101400

Page 215 | 90° Tee with Threaded Female Offtake



100500

Page 216 | 90° Elbow



100600

Page 216 | 45° Elbow



107500

Page 217 | Wall Plate Elbow



105100

Page 217 | 90° Reducing Elbow



1005M6

Page 218 | 90° Elbow Metric to Imperial (IPS)



10N70

Page 218 | 90° Elbow with PA Male Thread



10N7G

Page 219 | 90° Elbow with PA Male Thread "G"



108500

Page 219 | 90° Elbow with Threaded Male Offtake



104500

Page 220 | 45° Elbow with Threaded Male Offtake



101500

Page 220 | 90° Elbow with Threaded Female Offtake



107700

Page 221 | 90° Elbow with Threaded Brass Male Offtake



107600

Page 221 | 90° Elbow with Threaded Brass Female Offtake



1076F0

Page 223 | 90° Elbow Female Brass Free Nut Transition



037100

Page 223 | PA Ball Valve Series 1 x Series 1



0371002

Page 224 | PA Ball Valve Series 1 x Male



0371003

Page 224 | PA Ball Valve Series 1 x Female



0371016

Page 224 | PA Ball Valve Series 1 x Free Nut



034100

Page 225 | Compression Stoptap



0341C0

Page 225 | Stoptap - Copper Pipe Adaptor



0358916

Page 226 | Free Nut Union for Water Meter



0358917

Page 226 | Free Nut Adaptor with Check Valve



109900

Page 226 | PLASSON Series 1 Wrench



189600

Page 227 | Chamfer Tool for PE Pipes



100040

Page 227 | Nut



100020

Page 227 | NBR O-Ring



10002D

Page 228 | EPDM O-Ring



100029

Page 228 | NBR Shaped Seal



10002D9

Page 228 | EPDM Shaped Seal



100030

Page 229 | Split Ring



100080

Page 229 | Grip Ring

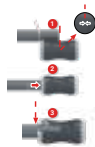


1091Q0

Page 229 | PVC Pipe Adaptor Kit



Page 230 | Installation Instructions



Page 230 | Disassembly



Page 231 | Assembly Instructions
PVC Pipe Kit



Page 232 | PLASSON Universal
Slip Repair Coupler
Assembly Instruction



G-PLASS Fittings

150100

Page 234 | Coupler



151100

Page 234 | Reducing Coupler



150600

Page 234 | 45° Elbow



150500

Page 235 | 90° Elbow



150400

Page 235 | 90° Tee



153400

Page 235 | 90° Reducing Tee



150200

Page 236 | Male Adaptor



157200

Page 236 | Male Adaptor with
Threaded Brass Offtake



151200

Page 236 | End Cap Body for Gas



159511

Page 237 | G-PLASS Liner



150040

Page 237 | G-PLASS Nut



150030

Page 237

G-PLASS Split Ring



150020

Page 238

G-PLASS O-Ring/
Shaped Seal



159900

Page 238

G-PLASS Wrench



159600

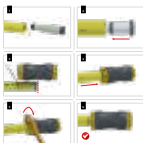
Page 238

G-PLASS Integral
Chamfer Tool



Page 239-240

Gglass Installation
Instructions





UNIVERSAL SLIP REPAIR COUPLING



**SLIDE
N'SEAL**



PN16	PN16	PN16	PN16	PN16	PN16	PN16
14-18mm	19-22mm	24-28mm	31-35mm	40-43mm	48-51mm	60-64mm
0.55"-0.71"	0.74"-0.88"	0.94"-1.1"	1.22"-1.37"	1.57"-1.69"	1.89"-2.00"	2.36"-2.52"

TYPICAL PIPES:

25mm	32mm	40mm	50mm	63mm
3/4"	1"	1 1/4"	1 1/2"	2"

Pull-Out Resistant

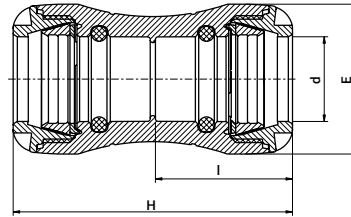
- Suits a variety of plastic and metal pipe materials
- Each fitting designed to fit a wide range of diameters
- Zero force pipe insertion – can slide freely back and forth
- Thick o-ring seal – compensates for poor pipe quality
- Long sealing area – can bridge over damaged section or gap between pipes
- Total reliability - PN16, 50 year design life



For further information regarding dimensions, suitable pipes and assembly instructions please scan the code.

Coupler

100100

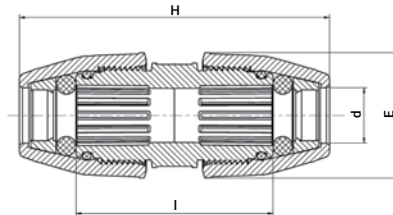


Product Code	Size d	E	H	I	UB	UC	W
100100020	20	41	92	45	1	320	64
100100025	25	47	98	48	1	250	80
100100032	32	58	108	53	1	150	126
100100040	40	70	142	70	1	90	256
100100050	50	85	158	78	1	55	369
100100063	63	103	183	90	1	30	620

Universal Slip Repair Coupler

NEW!

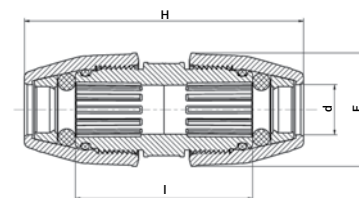
176100



Product Code	Size d	E	H	I	UB	UC	W
176100014018	14-18	54	180	119	1	120	220
176100019022	19-22	58	180	119	1	90	250
176100024028	24-28	66	200	133	1	56	345
176100031035	31-35	76	210	143	1	40	467
176100040043	40-43	89	250	151	1	30	717
176100048051	48-51	101	270	158	1	20	968
176100060064	60-64	120	310	176	1	10	1517

Slip Repair Coupler

176100/1761Q0*

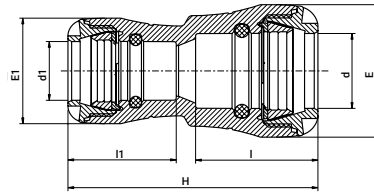


Product Code	Size d	E	H	I	UB	UC	W
1761Q0025	25	60	150	94	5	100	182
1761Q0032	32	68	160	96	5	80	238

* Split ring with metal teeth for wide range of plastic pipes

Reducing Coupler

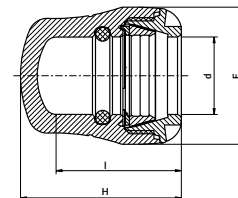
101100



Product Code	Size d x d1	E	H	I	l1	E1	UB	UC	W
101100025020	25 x 20	47	100	48	45	41	1	250	75
101100032020	32 x 20	58	106	54	45	41	1	200	95
101100032025	32 x 25	58	110	54	48	47	1	200	109
101100040025	40 x 25	70	137	71	51	58	1	130	182
101100040032	40 x 32	70	139	71	55	58	1	100	196
101100050025	50 x 25	85	151	79	46	47	1	80	262
101100050032	50 x 32	85	151	79	55	58	1	75	285
101100050040	50 x 40	85	165	77	53	58	1	65	326
101100063032	63 x 32	103	170	91	55	58	1	45	446
101100063040	63 x 40	103	184	91	72	70	1	40	485
101100063050	63 x 50	103	187	91	81	85	1	35	542

End Plug

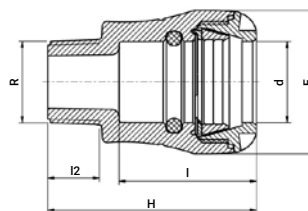
101200



Product Code	Size d	E	H	I	UB	UC	W
101200020	20	41	56	45	1	420	39
101200025	25	47	60	48	1	380	50
101200032	32	58	68	53	1	280	82
101200040	40	70	90	71	1	150	146
101200050	50	85	102	79	1	100	229
101200063	63	103	117	91	1	55	379

Male Adaptor

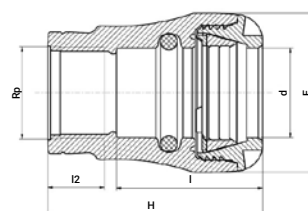
100200



Product Code	Size d x R	E	H	I	I2	UB	UC	W
100200020005	20 x 1/2"	41	70	45	16	1	400	41
100200020007	20 x 3/4"	41	71	45	17	1	380	41
100200025005	25 x 1/2"	47	75	48	16	1	380	52
100200025007	25 x 3/4"	47	76	48	17	1	350	52
100200025010	25 x 1"	47	78	48	19	1	320	55
100200032007	32 x 3/4"	58	82	55	17	1	250	83
100200032010	32 x 1"	58	84	55	19	1	250	86
100200032013	32 x 1 1/4"	58	86	55	21	1	250	90
100200032015	32 x 1 1/2"	58	86	55	21	1	250	94
100200032020	32 x 2"	58	97	55	25	1	180	138
100200040010	40 x 1"	70	104	73	19	1	140	145
100200040013	40 x 1 1/4"	70	106	73	21	1	135	149
100200040015	40 x 1 1/2"	70	106	73	21	1	130	152
100200040020	40 x 2"	70	110	73	25	1	130	161
100200050010	50 x 1"	85	125	78	19	1	90	238
100200050013	50 x 1 1/4"	85	122	78	21	1	90	234
100200050015	50 x 1 1/2"	85	114	81	21	1	90	226
100200050020	50 x 2"	85	118	81	25	1	85	232
100200063015	63 x 1 1/2"	103	125	92	19	1	50	377
100200063020	63 x 2"	103	129	92	25	1	50	367

Female Adaptor

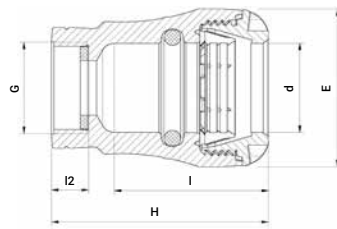
100300



Product Code	Size d x Rp	E	H	I	I2	UB	UC	W
100300020005	20 x 1/2"	41	67	45	17	1	400	43
100300020007	20 x 3/4"	41	71	45	18	1	400	45
100300025005	25 x 1/2"	47	70	48	17	1	380	52
100300025007	25 x 3/4"	47	71	48	18	1	350	52
100300025010	25 x 1"	47	80	48	21	1	350	60
100300032007	32 x 3/4"	58	77	54	18	1	250	78
100300032010	32 x 1"	58	79	54	21	1	250	81
100300032013	32 x 1 1/4"	58	90	54	24	1	200	112
100300032015	32 x 1 1/2"	58	95	54	24	1	140	123
100300040010	40 x 1"	70	97	70	21	1	140	153
100300040013	40 x 1 1/4"	70	100	70	24	1	135	171
100300040015	40 x 1 1/2"	70	103	70	24	1	130	171
100300050013	50 x 1 1/4"	85	110	78	24	1	90	241
100300050015	50 x 1 1/2"	85	110	78	24	1	90	247
100300050020	50 x 2"	85	118	78	29	1	80	252
100300063015	63 x 1 1/2"	103	125	90	24	1	50	378
100300063020	63 x 2"	103	129	90	29	1	45	379

Female Adaptor G Thread

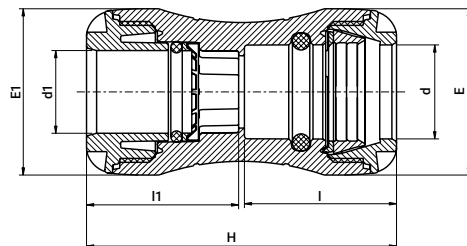
1003G0



Product Code	Size d x G	E	H	I	I2	UB	UC	W
1003G0025007	25 x 3/4"	47	71	48	12	1	280	53
1003G0025010	25 x 1"	47	80	48	14	1	260	63
1003G0032007	32 x 3/4"	58	76	54	12	1	200	79
1003G0032010	32 x 1"	58	79	54	14	1	200	83
1003G0032013	32 x 1 1/4"	58	90	64	19	1	200	105
1003G0032015	32 x 1 1/2"	64	95	67	19	1	180	105
1003G0040013	40 x 1 1/4"	70	100	74	19	1	135	135
1003G0040015	40 x 1 1/2"	70	103	70	19	1	130	173
1003G0050015	50 x 1 1/2"	85	110	78	19	1	90	252
1003G0050020	50 x 2"	85	118	89	23	1	80	260
1003G0063015	63 x 1 1/2"	103	125	90	19	1	50	260
1003G0063020	63 x 2"	103	129	95	23	1	50	383

Copper Pipe Adaptor

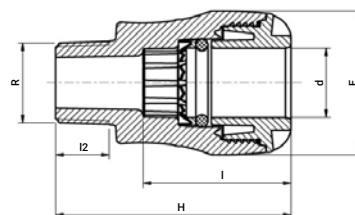
1001C0



Product Code	Size d x d1	E	H	I	I1	E1	UB	UC	W
1001C0020015	20 x 15	41	92	45	45	41	1	320	68
1001C0025015	25 x 15	47	100	48	46	41	1	250	79
1001C0025022	25 x 22	47	98	48	48	47	1	220	81
1001C0032028	32 x 28	58	108	53	53	58	1	150	131
1001C0040028	40 x 28	70	139	71	55	58	1	100	203

Copper Pipe Male Adaptor

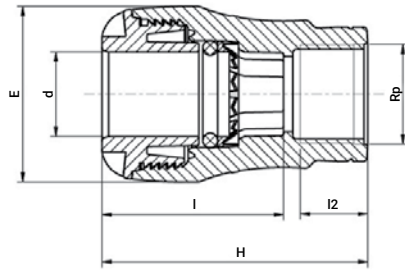
1002C7



Product Code	Size d x R	E	H	I	I2	UB	UC	W
1002C7015007	15 x 3/4"	41	71	45	17	1	300	47
1002C7022007	22 x 3/4"	47	76	48	17	1	300	51
1002C7028010	28 x 1"	58	84	55	19	1	180	91

Female Copper Adaptor

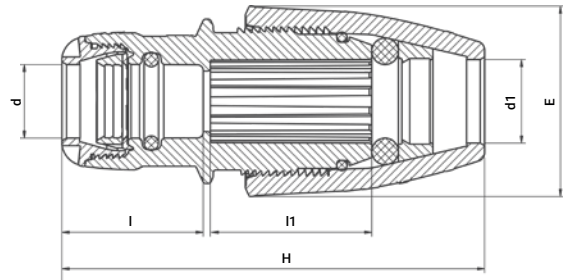
1003C7



Product Code	Size d x Rp	E	H	I	I2	UB	UC	W
1003C7015007	15 x 3/4"	41	71	45	18	1	300	48
1003C7022007	22 x 3/4"	47	71	48	18	1	280	55

Universal Adaptor

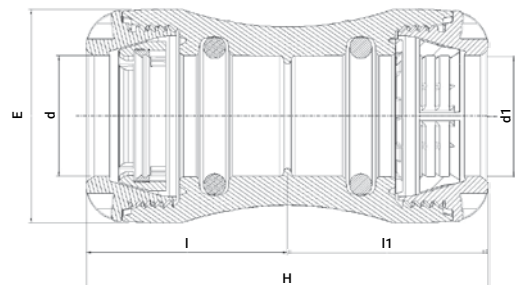
10017U



Product Code	Size d x d1	E	H	I	I1	UB	UC	W
10017U025018	25 x 14-18	54	117-137	48	47	5	180	130
10017U025022	25 x 19-22	57	119-130	48	47	5	150	141
10017U025028	25 x 24-28	66	130-142	48	55	5	120	180
10017U025035	25 x 31-35	76	150-158	48	62	5	70	243

PE to PVC Pipe Adaptor

1001Q0

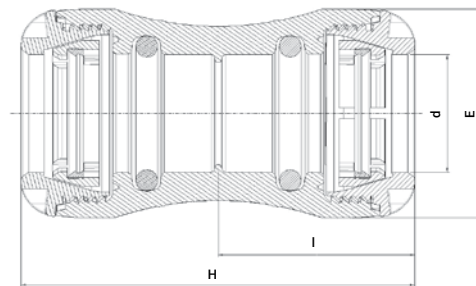


Product Code	Size d x d1*	E	H	I	I1	UB	UC	W
1001Q0025	25 x 25	47	98	48	48	1	200	85
1001Q0032	32 x 32	58	108	53	53	1	150	133
1001Q0040	40 x 40	70	142	70	70	1	100	249
1001Q0050	50 x 50	85	158	78	78	1	55	379
1001Q0063	63 x 63	103	183	90	90	1	30	649

* d1 - PVC connection

Coupling for PVC Pipe

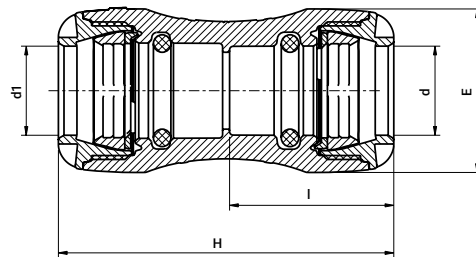
1001QQ



Product Code	Size d	E	H	I	UB	UC	W
1001QQ025	25	47	98	48	1	200	95
1001QQ032	32	58	108	53	1	130	144
1001QQ040	40	70	142	70	1	80	262
1001QQ050	50	85	158	78	1	55	386
1001QQ063	63	103	183	90	1	38	678

Coupler Metric to Imperial (IPS)

1001M6



Product Code	Size d x d1	E	H	I	UB	UC	W
1001M6020005	20 x 1/2"	41	92	45	10	400	57
1001M6025005	25 x 1/2"	47	100	48	10	240	76
1001M6025007	25 x 3/4"	47	98	48	10	300	80
1001M6032010	32 x 1"	58	108	53	5	180	130

PLASSON PA Threads

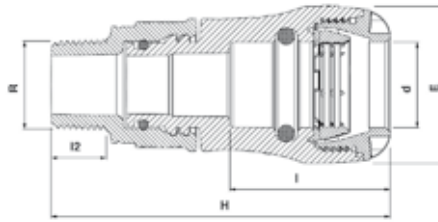
- ✓ Corrosion free
- ✓ Ideal for handling high-pressure environments, stresses and heavy loads
- ✓ Smooth assembly and disassembly, reducing the risk of thread damage
- ✓ Suitable for outdoor applications
- ✓ Suitable for professionals and DIY enthusiasts alike



 **PLASSON**[®]
Flow Solutions

PA Male Adaptor

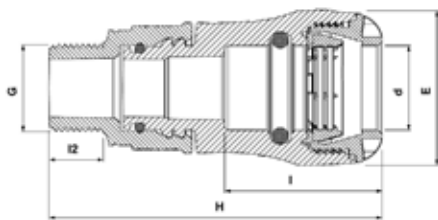
10N200



Product Code	Size d x R	H	E	I	I2	UB	UC	W
10N200020005	20 x 1/2"	95	41	45	16	1	320	70
10N200020007	20 x 3/4"	96	41	45	17	1		
10N200020010	20 x 1"	77	41	45	19	1		
10N200025005	25 x 1/2"	101	47	48	16	1	300	80
10N200025007	25 x 3/4"	102	47	48	17	1	300	80
10N200025010	25 x 1"	104	47	48	19	1	300	90
10N200032007	32 x 3/4"	118	58	55	16	1	150	160
10N200032010	32 x 1"	120	58	55	19	1	145	170
10N200032013	32 x 1 1/4"	122	58	55	22	1	130	170
10N200032015	32 x 1 1/2"	122	58	55	22	1		
10N200032020	32 x 2"	133	58	55	26	1		
10N200040007	40 x 3/4"					1		
10N200040010	40 x 1"	140	70	73	19	1	110	220
10N200040013	40 x 1 1/4"	142	70	73	22	1	100	230
10N200040015	40 x 1 1/2"	142	70	73	22	1		
10N200050013	50 x 1 1/4"	158	85	78	22	1	55	440
10N200050015	50 x 1 1/2"	158	85	78	22	1		
10N200050020	50 x 2"	162	85	78	26	1		
10N200063015	63 x 1 1/2"	171	103	89	22	1		
10N200063020	63 x 2"	175	103	92	26	1	40	590

PA Male G Adaptor

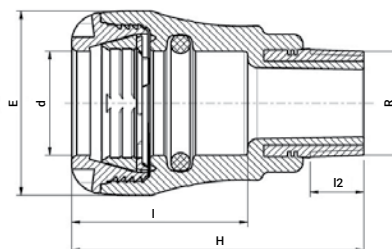
10N2G0



Product Code	Size d x G	H	E	I	I2	UB	UC	W
10N2G0020005	20 x 1/2"	95	41	45	16	1	350	70
10N2G0020007	20 x 3/4"	96	41	45	17	1		
10N2G0020010	20 x 1"	77	41	45	19	1		
10N2G0025005	25 x 1/2"	101	47	48	16	1		
10N2G0025007	25 x 3/4"	102	47	48	17	1	300	80
10N2G0025010	25 x 1"	104	47	48	19	1	250	80
10N2G0032007	32 x 3/4"	118	58	55	16	1		
10N2G0032010	32 x 1"	120	58	55	19	1	145	170
10N2G0032013	32 x 1 1/4"	122	58	55	22	1		
10N2G0032015	32 x 1 1/2"	122	58	55	22	1		
10N2G0040010	40 x 1"	140	70	73	19	1		
10N2G0040013	40 x 1 1/4"	142	70	73	22	1		
10N2G0040015	40 x 1 1/2"	142	70	73	22	1		
10N2G0040020	40 x 2"	146	70	73	26	1		
10N2G0050013	50 x 1 1/4"	158	85	78	22	1		
10N2G0050015	50 x 1 1/2"	158	85	78	22	1		
10N2G0050020	50 x 2"	162	85	78	26	1		
10N2G0063015	63 x 1 1/2"	171	103	89	22	1		
10N2G0063020	63 x 2"	175	103	92	26	1		

Male Adaptor with Threaded Brass Offtake

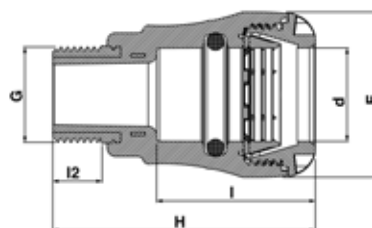
107200



Product Code	Size d x R	E	H	I	I2	UB	UC	W
107200020005	20 x 1/2"	41	76	45	13	1	360	72
107200020007	20 x 3/4"	41	77	45	15	1	320	82
107200025005	25 x 1/2"	47	79	48	13	1	320	82
107200025007	25 x 3/4"	47	80	48	15	1	280	92
107200025010	25 x 1"	47	85	48	17	1	200	126
107200032007	32 x 3/4"	58	88	55	15	1	220	120
107200032010	32 x 1"	58	92	55	17	1	170	153
107200032013	32 x 1 1/4"	58	100	55	19	1	130	200
107200032015	32 x 1 1/2"	58	101	55	19	1	110	239
107200040010	40 x 1"	70	110	73	17	1	130	216
107200040013	40 x 1 1/4"	70	113	73	19	1	110	260
107200040015	40 x 1 1/2"	70	113	73	19	1	80	290
107200050010	50 x 1"	85	127	81	17	1	90	301
107200050013	50 x 1 1/4"	85	127	81	19	1	80	340
107200050015	50 x 1 1/2"	85	120	81	19	1	75	366
107200050020	50 x 2"	85	127	81	23	1	60	449
107200063015	63 x 1 1/2"	103	132	92	19	1	50	500
107200063020	63 x 2"	103	139	92	23	1	50	580

Male Adaptor with Threaded Brass "G" Offtake

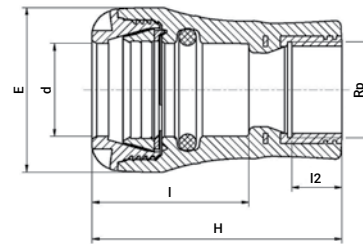
1072G0



Product Code	Size d x G	H	E	I	I2	UB	UC	W
1072G0020005	20 x 1/2"	76	41	45	13	1	360	70
1072G0020007	20 x 3/4"	77	41	45	15	1	320	80
1072G0025005	25 x 1/2"	79	47	48	13	1	320	120
1072G0025007	25 x 3/4"	80	47	48	15	1	260	90
1072G0025010	25 x 1"	85	47	48	17	1	200	130
1072G0032010	32 x 1"	92	58	55	17	1	150	150
1072G0032013	32 x 1 1/4"	100	58	55	19	1	130	200
1072G0040013	40 x 1 1/4"	110	70	73	19	1	110	250
1072G0040015	40 x 1 1/2"	113	70	73	19	1	80	290
1072G0050015	50 x 1 1/2"	120	85	81	19	1	70	370
1072G0050020	50 x 2"	127	85	81	23	1	50	480
1072G0063020	63 x 2"	132	103	92	23	1	50	600

Female Adaptor with Threaded Brass Offtake

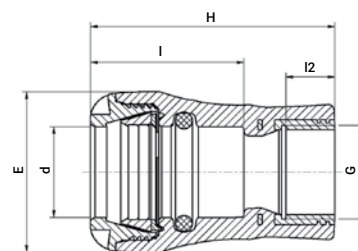
107300



Product Code	Size d x Rp	E	H	I	I2	UB	UC	W
107300020005	20 x 1/2"	41	73	45	15	1	320	80
107300020007	20 x 3/4"	41	80	45	16	1	250	100
107300025005	25 x 1/2"	47	76	48	15	1	280	91
107300025007	25 x 3/4"	47	78	48	16	1	250	100
107300025010	25 x 1"	47	89	48	19	1	180	136
107300032007	32 x 3/4"	58	86	56	16	1	180	132
107300032010	32 x 1"	58	88	56	19	1	160	156
107300032013	32 x 1 1/4"	58	98	56	21	1	120	214
107300040007	40 x 3/4"	70	109	73	16	1	130	196
107300040010	40 x 1"	70	106	73	19	1	130	226
107300040013	40 x 1 1/4"	70	109	73	21	1	110	273
107300040015	40 x 1 1/2"	70	113	73	21	1	100	299
107300050010	50 x 1"	85	113	81	19	1	80	313
107300050013	50 x 1 1/4"	85	124	81	21	1	80	350
107300050015	50 x 1 1/2"	85	118	81	21	1	80	367
107300050020	50 x 2"	85	127	81	26	1	60	457
107300063015	63 x 1 1/2"	103	128	92	21	1	50	515
107300063020	63 x 2"	103	133	92	26	1	45	586

Female Adaptor with Threaded G Brass Offtake

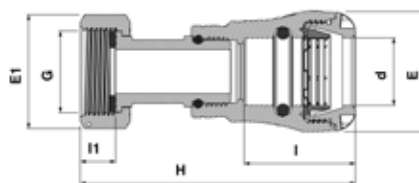
1073G0



Product Code	Size d x G	H	E	I	I2	UB	UC	W
1073G0020005	20 x 1/2"	73	41	45	12	1	320	90
1073G0020007	20 x 3/4"	80	41	55	12	1	250	100
1073G0025005	25 x 1/2"	76	47	48	12	1	280	190
1073G0025007	25 x 3/4"	78	47	48	12	1	250	100
1073G0025010	25 x 1"	89	47	48	14	1	180	140
1073G0032007	32 x 3/4"	86	58	56	12	1	180	140
1073G0032010	32 x 1"	88	58	56	14	1	160	160
1073G0032013	32 x 1 1/4"	99	58	69	19	1	100	240
1073G0040013	40 x 1 1/4"	109	70	73	19	1	90	260
1073G0040015	40 x 1 1/2"	109	70	81	19	1	90	310
1073G0050015	50 x 1 1/2"	118	85	68	19	1	80	360
1073G0050020	50 x 2"	127	85	88	23	1	40	550
1073G0063020	63 x 2"	133	103	92	23	1	35	680

Female Brass Free Nut Transition

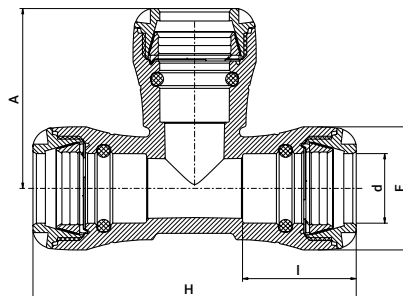
1073F0



Product Code	Size d x G	H	E	E1	I	I1	UB	UC	W
1073F0020007	20 x 3/4"	109	41	32	45	15	1	145	180
1073F0025007	25 x 3/4"	113	47	32	48	15	1	140	190
1073F0025010	25 x 1"	116	47	40	48	17	1	100	280
1073F0032010	32 x 1"	121	58	40	54	17	1	85	310
1073F0032013	32 x 1 1/4"	133	58	49	70	17	1	55	450
1073F0040013	40 x 1 1/4"	151	64	49	70	17	1	45	520
1073F0040015	40 x 1 1/2"	156	64	54	70	19	1	40	640
1073F0050015	50 x 1 1/2"	165	85	54	78	19	1	35	720
1073F0050020	50 x 2"	176	85	68	78	21	1	20	1050
1073F0063020	63 x 2"	191	103	68	90	21	1	20	1200

90° Tee

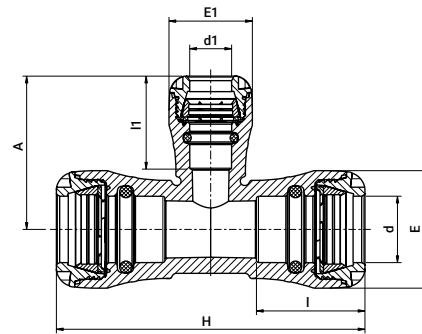
100400



Product Code	Size d	E	H	I	A	UB	UC	W
100400020	20	41	123	45	71	1	180	103
100400025	25	47	134	48	78	1	130	137
100400032	32	58	152	54	84	1	80	221
100400040	40	70	192	70	108	1	45	429
100400050	50	85	214	78	124	1	30	667
100400063	63	103	262	90	147	1	14	1157

90° Reducing Tee

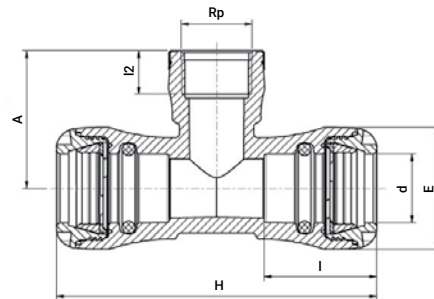
103400



Product Code	Size d x d1 x d	E	H	I	I1	A	E1	UB	UC	W
103400025020	25 x 20 x 25	47	134	48	46	73	41	1	150	127
103400032020	32 x 20 x 32	58	152	54	46	75	41	1	100	185
103400032025	32 x 25 x 32	58	152	54	49	81	47	1	100	195
103400040025	40 x 25 x 40	70	192	70	49	86	47	1	55	325
103400040032	40 x 32 x 40	70	192	70	54	93	58	1	55	358
103400050025	50 x 25 x 50	85	214	78	49	90	47	1	35	500
103400050032	50 x 32 x 50	85	214	78	54	98	58	1	35	530
103400063025	63 x 25 x 63	103	262	90	49	96	47	1	24	848
103400063032	63 x 32 x 63	103	262	90	54	100	58	1	20	871

90° Tee with Threaded Female Offtake

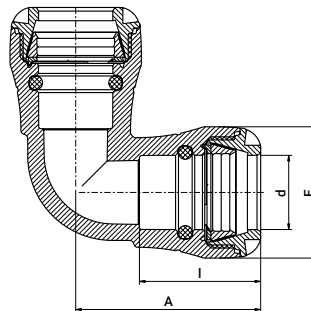
101400



Product Code	Size d x Rp x d	E	H	I	I2	A	UB	UC	W
101400020005	20 x 1/2" x 20	41	123	45	17	43	1	250	84
101400020007	20 x 3/4" x 20	41	123	45	18	46	1	220	88
101400020010	20 x 1" x 20	41	123	45	21	52	1	220	99
101400025005	25 x 1/2" x 25	47	134	48	17	46	1	180	105
101400025007	25 x 3/4" x 25	47	134	48	18	46	1	180	107
101400025010	25 x 1" x 25	47	134	48	21	54	1	180	114
101400032007	32 x 3/4" x 32	58	152	54	18	52	1	100	172
101400032010	32 x 1" x 32	58	152	54	21	55	1	100	183
101400032013	32 x 1 1/4" x 32	58	152	54	24	63	1	80	215
101400040010	40 x 1" x 40	70	192	70	21	65	1	65	304
101400040013	40 x 1 1/4" x 40	70	192	70	24	73	1	45	333

90° Elbow

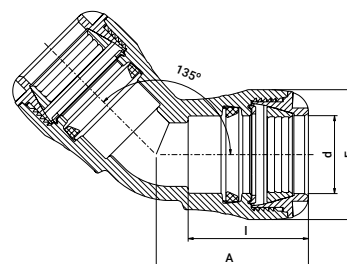
100500



Product Code	Size d	E	I	A	UB	UC	W
100500020	20	41	45	67	1	250	75
100500025	25	47	48	73	1	200	96
100500032	32	58	54	81	1	130	157
100500040	40	70	70	106	1	65	291
100500050	50	85	78	119	1	40	462
100500063	63	103	90	141	1	25	799

45° Elbow

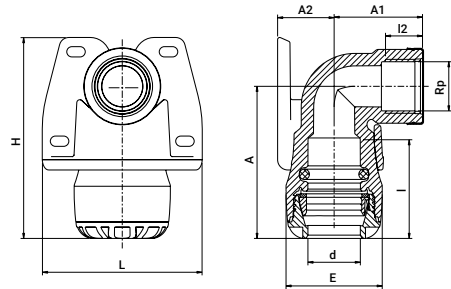
100600



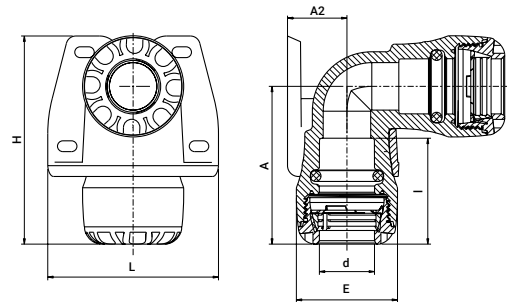
Product Code	Size d	E	I	A	UB	UC	W
100600032	32	58	54	67	1	150	142
100600040	40	70	71	88	1	80	263
100600050	50	85	79	100	1	40	428
100600063	63	103	90	118	1	25	719

Wall Plate Elbow

107500



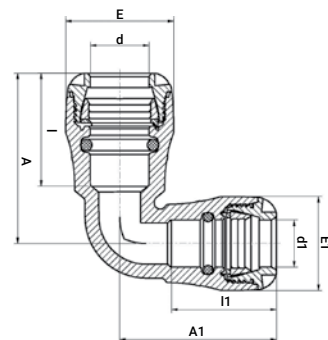
Product Code	Size d x Rp	E	H	I	I2	A	A1	A2	L	UB	UC	W
107500020005	20 x 1/2"	41	95	45	17	67	39	28	73	1	200	92
107500020007	20 x 3/4"	41	95	45	18	67	43	28	73	1	200	96
107500025005	25 x 1/2"	47	98	48	17	74	40	28	78	1	180	110
107500025007	25 x 3/4"	47	98	48	18	74	43	28	78	1	180	116



Product Code	Size d x d	E	H	I	A	A2	L	UB	UC	W
107500025	25 x 25	47	98	48	74	28	78	5	125	138

90° Reducing Elbow

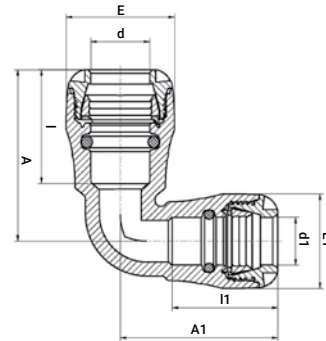
105100



Product Code	Size d x d1	E	I	I1	A	A1	E1	UB	UC	W
105100025020	25 x 20	47	48	46	74	68	41	1	200	90

90° Elbow Metric to Imperial (IPS)

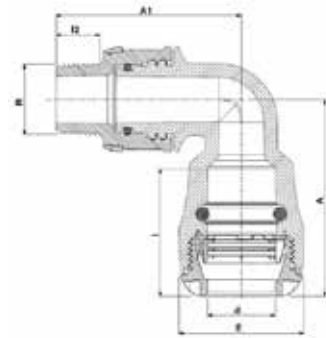
1005M6



Product Code	Size d x d1	E	I	I1	A	A1	E1	UB	UC	W
1005M6025005	25 x 1/2"	47	48	46	74	68	41	10	180	89
1005M6025007	25 x 3/4"	47	48	48	73	73	47	10	160	101

90° Elbow with PA Male Thread

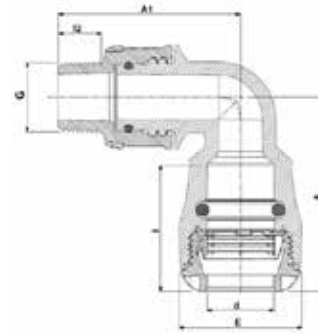
10N70



Product Code	Size d x Rp	A	A1	E	I	I2	UB	UC	W
10N700020005	20x1/2"	67	67	41	45	16			
10N700020007	20x3/4"	67	68	41	45	17			
10N700025005	25x1/2"	73	69	47	48	16			
10N700025007	25x3/4"	73	70	47	48	17			
10N700025010	25x1"	73	72	47	48	19			
10N700032007	32x3/4"	81	76	58	54	17			
10N700032010	32x1"	81	78	58	54	19			
10N700032013	32x1 1/4"	81	92	58	54	22			
10N700032015	32x1 1/2"	81	92	58	54	22			
10N700032020	32x2"	81	97	58	54	26			
10N700040010	40x1"	106	91	70	70	19			
10N700040013	40x1 1/4"	106	95	70	70	22			
10N700040015	40x1 1/2"	106	95	70	70	22			

90° Elbow with PA Male Thread "G"

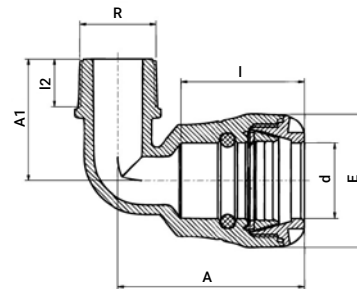
10N70G



Product Code	Size d x Rp	A	A1	E	I	I2	UB	UC	W
10N7G0020005	20x1/2"	67	67	41	45	16			
10N7G0020007	20x3/4"	67	68	41	45	17			
10N7G0025005	25x1/2"	73	69	47	48	16			
10N7G0025007	25x3/4"	73	70	47	48	17			
10N7G0025010	25x1"	73	72	47	48	19			
10N7G0032007	32x3/4"	81	76	58	54	17			
10N7G0032010	32x1"	81	78	58	54	19			
10N7G0032013	32x1 1/4"	81	92	58	54	22			
10N7G0032015	32x1 1/2"	81	92	58	54	22			

90° Elbow with Threaded Male Offtake

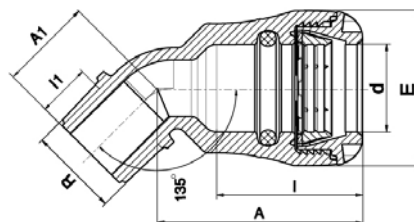
108500



Product Code	Size d x R	E	I	I2	A	A1	UB	UC	W
108500020005	20 x 1/2"	41	45	16	66	41	1	380	47
108500020007	20 x 3/4"	41	45	17	66	42	1	380	52
108500025005	25 x 1/2"	47	48	16	74	44	1	350	57
108500025007	25 x 3/4"	47	48	17	74	45	1	300	64
108500025010	25 x 1"	47	48	19	74	47	1	280	65
108500032007	32 x 3/4"	58	53	17	81	51	1	220	90
108500032010	32 x 1"	58	53	19	81	53	1	220	92
108500032013	32 x 1 1/4"	58	53	21	81	54	1	180	114
108500032015	32 x 1 1/2"	58	53	22	81	62	1	180	130
108500032020	32 x 2"	58	53	25	89	66	1	130	147
108500040010	40 x 1"	70	71	19	107	57	1	110	173
108500040013	40 x 1 1/4"	70	71	21	107	58	1	100	189
108500040015	40 x 1 1/2"	70	71	21	107	60	1	100	194
108500050013	50 x 1 1/4"	85	79	22	122	68	1	65	277
108500050015	50 x 1 1/2"	85	79	21	122	68	1	65	290
108500063013	60 x 1 1/4"	103	90	22	143	76	1	40	447
108500063015	63 x 1 1/2"	103	90	21	143	78	1	40	458
108500063020	63 x 2"	103	90	25	143	81	1	40	492

45° Elbow with Threaded Male Offtake

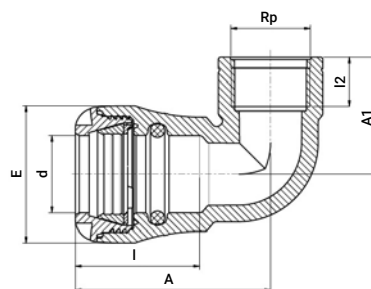
104500



Product Code	Size d x R	E	I	I1	A	A1	UB	UC	W
104500032010	32 x 1"	58	54	19	76	35	1	220	89
104500040013	40 x 1 1/4"	70	70	21	96	40	1	120	163

90° Elbow with Threaded Female Offtake

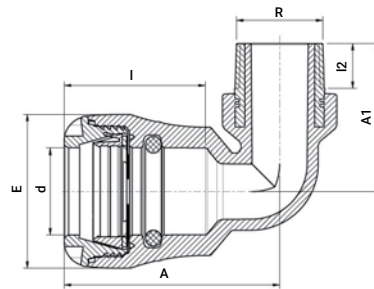
101500



Product Code	Size d x Rp	E	I	I2	A	A1	UB	UC	W
101500020005	20 x 1/2"	41	45	17	67	39	1	300	51
101500020007	20 x 3/4"	41	45	18	67	43	1	300	55
101500020010	20 x 1"	41	45	21	67	49	1	300	64
101500025005	25 x 1/2"	47	48	17	74	40	1	280	63
101500025007	25 x 3/4"	47	48	18	74	43	1	250	70
101500025010	25 x 1"	47	48	21	74	50	1	220	82
101500032007	32 x 3/4"	58	54	18	83	45	1	220	95
101500032010	32 x 1"	58	54	21	83	49	1	200	111
101500032013	32 x 1 1/4"	58	54	24	83	60	1	150	145
101500040010	40 x 1"	70	72	21	107	51	1	110	179
101500040013	40 x 1 1/4"	70	72	24	107	61	1	100	226
101500040015	40 x 1 1/2"	70	72	24	107	65	1	90	244
101500050015	50 x 1 1/2"	85	79	24	119	63	1	60	330
101500050020	50 x 2"	85	79	29	119	75	1	55	349
101500063020	63 x 2"	103	79	29	141	70	1	35	534

90° Elbow with Threaded Brass Male Offtake

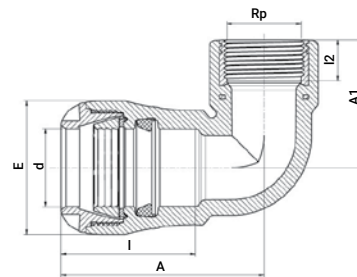
107700



Product Code	Size d x R	E	I	I2	A	A1	UB	UC	W
107700032007	32 x 3/4"	58	53	15	81	80	1	110	239
107700032010	32 x 1"	58	53	17	81	83	1	150	172
107700032013	32 x 1 1/4"	58	53	19	81	83	1	90	285
107700032015	32 x 1 1/2"	58	53	19	81	83	1	85	305
107700040010	40 x 1"	70	59	17	104	71	1	90	239
107700040013	40 x 1 1/4"	70	59	19	104	71	1	90	295
107700040015	40 x 1 1/2"	70	59	19	104	71	1	85	341
107700050010	50 x 1"	85	79	19	116	62	1	70	337
107700050013	50 x 1 1/4"	85	79	21	116	68	1	70	384
107700050015	50 x 1 1/2"	85	79	21	116	73	1	50	431
107700050020	50 x 2"	85	79	23	116	85	1	50	538
107700063013	63 x 1 1/4"	103	90	21	143	74	1	40	559
107700063015	63 x 1 1/2"	103	90	21	143	74	1	40	592
107700063020	63 x 2"	103	90	26	143	85	1	40	726

90° Elbow with Threaded Brass Female Offtake

107600



Product Code	Size d x Rp	E	I	I2	A	A1	UB	UC	W
107600032010	32 x 1"	58	53	19	73	60	1	140	187
107600040007	40 x 3/4"	70	72	16	107	51	1	120	219
107600040010	40 x 1"	70	72	19	107	60	1	90	266
107600040013	40 x 1 1/4"	70	72	21	107	67	1	90	313
107600040015	40 x 1 1/2"	70	72	21	107	70	1	85	355
107600050010	50 x 1"	85	79	19	122	60	1	70	349
107600050013	50 x 1 1/4"	85	79	21	122	67	1	60	403
107600050015	50 x 1 1/2"	85	79	21	122	73	1	60	455
107600050020	50 x 2"	85	79	26	122	84	1	50	558
107600063013	63 x 1 1/4"	103	90	21	143	68	1	40	575
107600063015	63 x 1 1/2"	103	90	21	143	72	1	40	625
107600063020	63 x 2"	103	90	26	143	82	1	35	747



PA Ball Valve

Full Bore Ball Valve With A Drain Port Option!



Features and benefits

- Full bore design minimizing pressure loss
- Two drain ports
- Rated PN16
- Glass Reinforced Polyamide body



PLASSON'S Ball Valve is produced entirely of plastic, eliminating the risk of corrosive damage to the system.

PLASSON'S Ball Valve features an option for two ISO 7-2 Rp drain ports or no drain ports. Ideally suited for draining or sampling of potable water systems and monitoring system pressure.



Removable Tamper Resistant Handle

Easily identifiable drain port option:

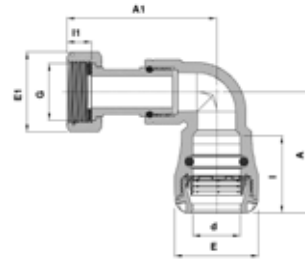
- Blue dot - no drain port
- Black plug- optional drain port



Two Drain Port Option

90° Elbow Female Brass Free Nut Transition

1076F0

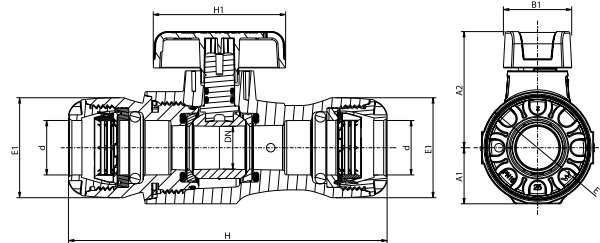


Product Code	Size d x G	E	E1	I	I1	A	A1	UB	UC	W
1076F0025007	25x3/4"							1	125	200
1076F0032010	32x1"	58	40	54	17	83	90	1	80	320
1076F0032013	32x1 1/4"	58	49	54	17	83	103	1	50	480
1076F0040013	40x1 1/4"	70	49	72	17	107	105	1	45	550
1076F0040015	40x1 1/2"	70	54	72	19	107	116	1	35	710
1076F0050015	50x1 1/2"	85	54	79	19	119	116	1		
1076F0050020	50x2"	85	68	79	21	119	130	1	20	1130
1076F0063020	63x2"	103	68	79	21	141	130	1		

PA Ball Valve Series 1 x Series 1

NEW!

037100



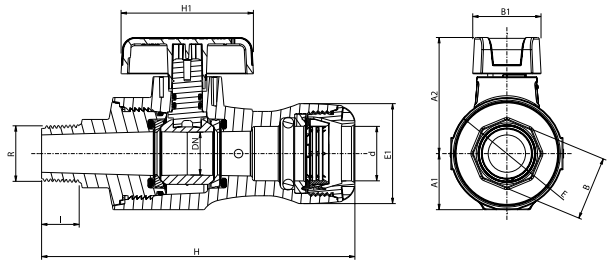
Product Code	Size d	Rp	DN	A1	A2	H	E	E1	UC	W
03710S00025	25	1/8"	20	27	54	150	53	47	105	230
03710S00032	32	1/8"	25	33	64	170	64	58	60	390

* 03710SF - with drain port | * 03710SF - con sistema de purga

PA Ball Valve Series 1 x Male

NEW!

0371002



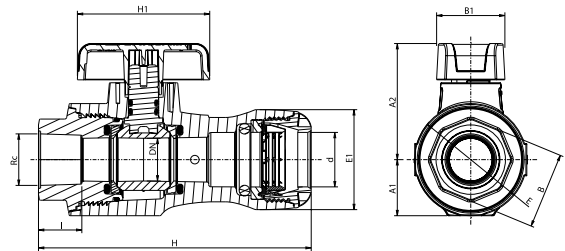
Product Code	Size dxR	Rp	DN	A1	A2	H	I2	B	E	E1	UC	W
03710020S00025007	25 x 3/4"	1/8"	20	27	54	148	18	30	53	47	110	220
03710020S00032010	32 x 1"	1/8"	25	33	64	165	21	41	64	58	45	370

* 03710020SF - with drain port | * 03710020SF - con sistema de purga

PA Ball Valve Series 1 x Female

NEW!

0371003



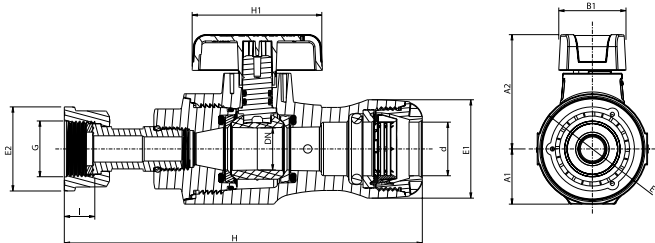
Product Code	Size dxRc	Rp	DN	A1	A2	H	I2	B	E	E1	UC	W
03710030S00025007	25 x 3/4"	1/8"	20	27	54	129	19	36	53	47	90	210
03710030S00032010	32 x 1"	1/8"	25	33	64	148	22	46	64	58	60	360

* 03710030SF - with drain port | * 03710030SF - con sistema de purga

PA Ball Valve Series 1 x Free Nut

NEW!

0371016

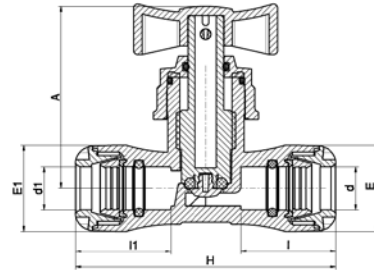


Product Code	Size dxG	Rp	DN	A1	A2	H	E	E1	E1	UC	W
0371016S00025007	25 x 3/4"	1/8"	20	27	54	171	53	47	40	100	250
0371016S00025010	25 x 1"	1/8"	25	27	54	179	53	47	48	95	260
0371016S00032010	32 x 1"	1/8"	32	33	64	192	64	57	48	55	420

* 0371016SF - with drain port | * 0371016SF - con sistema de purga

Compression Stoptap

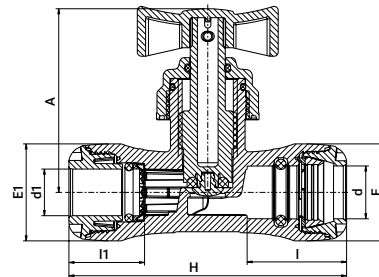
034100



Product Code	Size d x d1	E	H	I	I1	A	E1	UB	UC	W
034100020	20 x 20	41	123	45	—	89	—	1	130	145
034100025	25 x 25	47	134	48	—	89	—	1	130	167
034100025020	25 x 20	47	129	48	45	89	42	1	130	161
034100032	32 x 32	58	152	54	—	89	—	1	80	225

Stoptap - Copper Pipe Adaptor

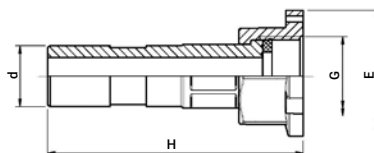
0341C0



Product Code	Size d x d1	E	H	I	I1	A	E1	UB	UC	W
0341C0020015	20 x 15	41	123	45	45	89	41	1	130	149
0341C0025015	25 x 15	47	129	48	46	89	42	1	130	165
0341C0025022	25 x 22	47	134	48	48	89	47	1	130	171
0341C0032028	32 x 28	58	159	54	54	89	58	1	80	223

Free Nut Union for Water Meter

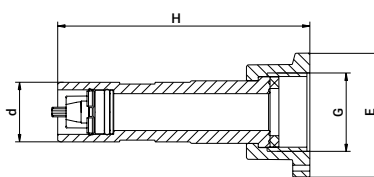
0358916



Product Code	Size d x G	E	H	UB	UC	W
0358916020	20 x 3/4"	42	86	1	150	75
0358916025	25 x 1"	50	90	1	150	111

Free Nut Adaptor with Check Valve

0358917



Product Code	Size d x G	E	H	UB	UC	W
0358917020	20 x 3/4"	44	86	10	300	40
0358917025	25 x 1"	50	90	10	300	58

PLASSON Series 1 Wrench

109900



Product Code	Size	UB	UC	W
10990004P	20 - 32	—	300	72
10990002P	40 - 63	—	100	285

Chamfer Tool for PE Pipes

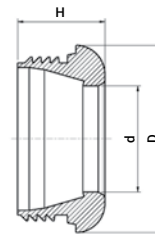
189600



Product Code	Size	UB	UC	W
189600063020P	20 - 63	1	180	86

Nut

100040



Product Code	Size d	D	H	UB	UC	W
100040020P	20	40	22	50	1400	7
100040025P	25	45	22	50	1200	8
100040032P	32	57	24	50	900	15
100040040P	40	68	33	50	500	29
100040050P	50	83	37	—	300	44
100040063P	63	100	43	—	200	60

NBR O-Ring

100020



Product Code	Pipe Size	E	e	UB	UC	W
100020020P	20	19	4	50	32000	1
100020025P	25	24	5	50	16000	2
100020032P	32	31	6	50	10000	4

EPDM O-Ring

10002D



Product Code	Pipe Size	E	e	UB	UC	W
10002D020	20	19	4	50	32000	1
10002D025	25	24	5	50	16000	2
10002D032	32	31	6	50	8000	4

NBR Shaped Seal

100029



Product Code	Pipe Size	E	e	UB	UC	W
100029040P	40	38	10	50	4000	8
100029050P	50	49	10	50	2500	11
100029063P	63	61	11	50	2000	15

EPDM Shaped Seal

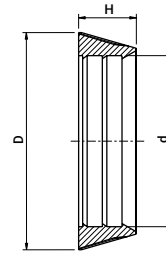
10002D9



Product Code	Pipe Size	E	e	UB	UC	W
10002D940	40	38	10	50	4000	7
10002D950	50	48.6	10	50	2500	9
10002D963	63	60.6	11	50	2000	13

Split Ring

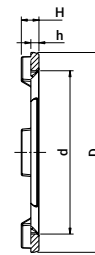
100030



Product Code	Size d	D	H	UB	UC	W
100030020P	20	27	9	50	6000	2
100030025P	25	33	9	50	4500	3
100030032P	32	42	11	50	2000	4
100030040P	40	52	14	50	1600	14
100030050P	50	64	17	50	500	14
100030063P	63	81	21	50	500	27

Grip Ring

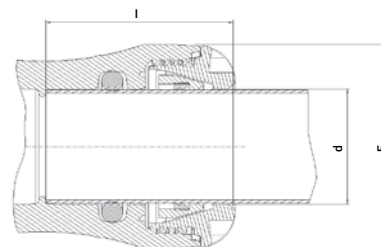
100080



Product Code	Size d	D	H	h	UB	UC	W
100080020P	20	27	4	2	50	7000	1
100080025P	25	33	4	2	50	5500	1
100080032P	32	42	4	2	50	3000	1
100080040P	40	52	4	2	50	2500	2
100080050P	50	64	4	3	50	1000	3
100080063P	63	80	5	3	50	1000	6

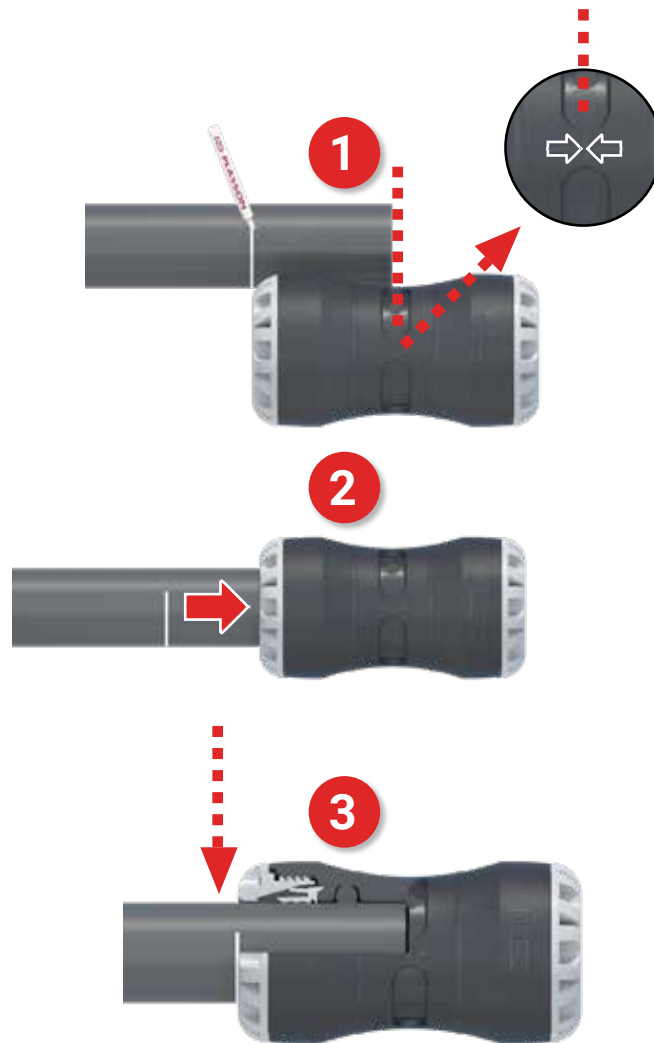
PVC Pipe Adaptor Kit

1091Q0

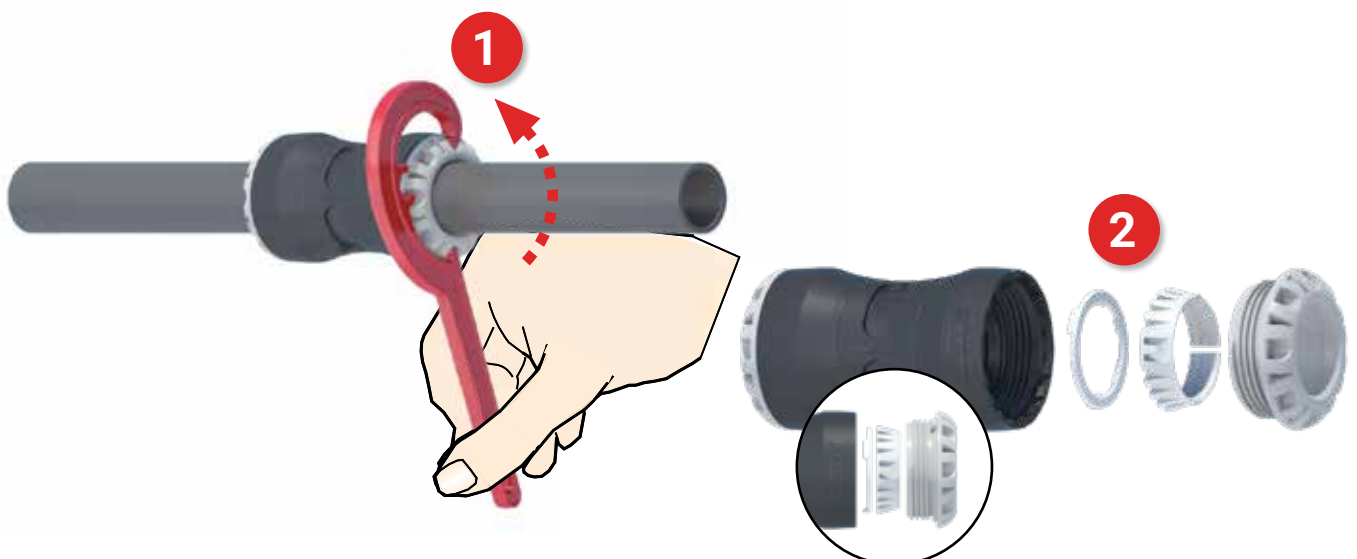


Product Code	Size d	E	I	UB	UC	W
1091Q0025	25	47	48	1	500	26
1091Q0032	32	58	53	1	400	31
1091Q0040	40	70	70	1	300	56
1091Q0050	50	85	78	1	200	72
1091Q0063	63	103	90	1	130	134

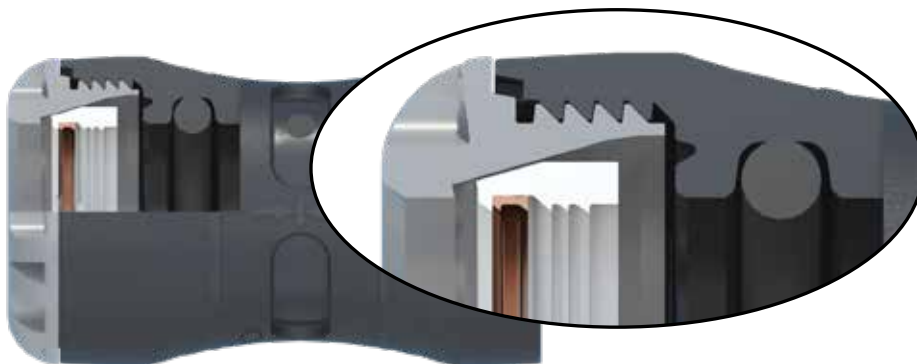
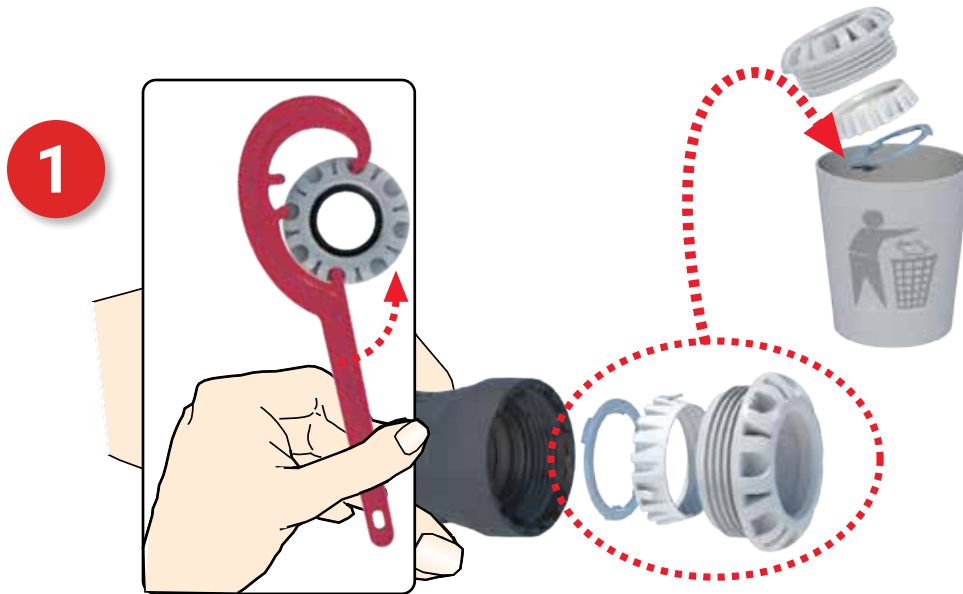
Installation Instructions



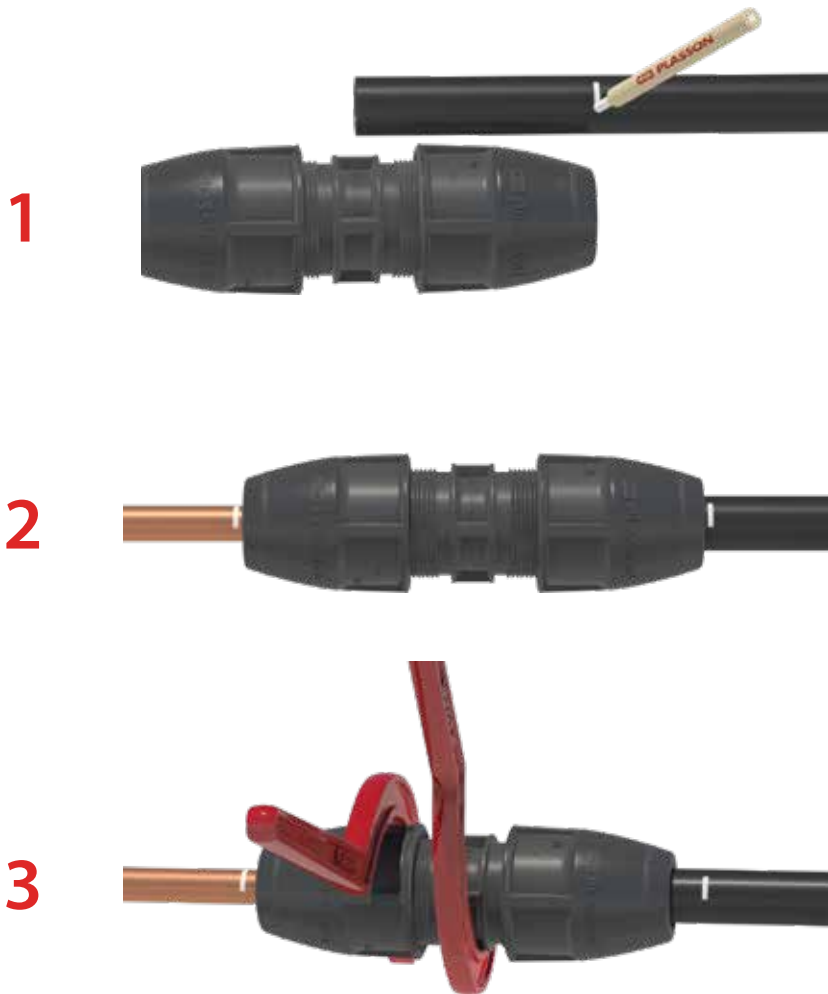
Disassembly



Assembly Instructions PVC Pipe Kit



Plasson Universal Slip Repair Coupler Assembly Instructions



1. Mark pipe insertion depth on the pipe (approximately half the fitting length). Undo nuts 1 to 2 turns while ensuring they remain on the fitting.
2. Insert the pipe until the mark reaches the end of the nut.
3. While holding the fitting body with a Plasson wrench (or a similar tool) tighten the nut firmly with a second wrench.

Note: If the fitting is reused, make sure metal teeth are present in the split ring.

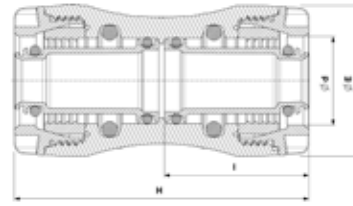


PLASSON G-PLASS - Features and Benefits:

- Designed, tested, and approved for use in gas systems in accordance with ISO 17885 standard.
- Diameters 32-63 mm in various geometries: couplers, elbows, tees and threaded male transitions.
- Fast and simple assembly, ideal for house connections.
- Compact size - enables assembly in confined spaces.
- Designed to accommodate PLASSON EFV (Excess Flow Valve).
- Multiple sealing elements ensuring leak-tight assembly.
- Full end load performance.
- Approvals:
 - ISO 17885 for Gas
 - DVGW G 5600-2

Coupler

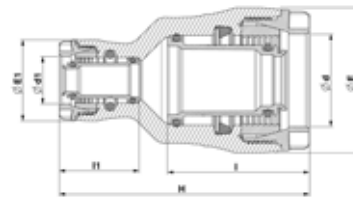
150100



Product Code	Size d	E	H	I	UB	UC	W
150100020	20	40	98	48			
150100025	25	46	106	52			
150100032	32	58	112	55	1	120	180
150100040	40	70	148	73	1	60	340
150100050	50	85	167	82	1	40	530
150100063	63	103	192	95	1	25	860

Reducing Coupler

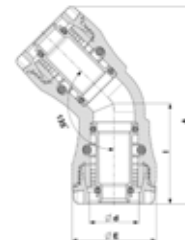
151100



Product Code	Size d	E	E1	H	I	L1	UB	UC	W
151100025020	25 x 20	47	40	108	52	48			
151100032020	32 x 20	58	41	112	56	48			
151100032025	32 x 25	58	47	116	56	52			
151100040032	40 x 32	70	58	144	74	57	1	65	280
151100050032	50 x 32	85	58	158	83	57	1	50	390
151100050040	50 x 40	85	70	172	83	57	1	40	460
151100063032	63 x 32	103	58	177	96	57	1	35	600
151100063040	63 x 40	103	70	192	96	75	1	30	660
151100063050	63 x 50	103	85	196	96	85	1	25	740

45° Elbow

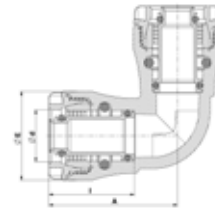
150600



Product Code	Size d	E	A	I	UB	UC	W
150600032	32	58	69	56	1	100	200
150600040	40	70	91	74	1	50	370
150600050	50	85	104	83	1	40	580
150600063	63	103	123	95	1	20	970

90° Elbow

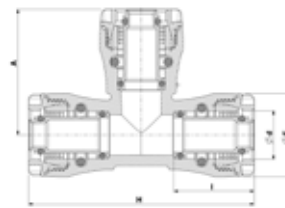
150500



Product Code	Size d	E	A	I	UB	UC	W
150500020	20	40	70	48			
150500025	25	47	77	52			
150500032	32	58	83	56	1	90	210
150500040	40	70	109	73	1	50	400
150500050	50	85	123	82	1	35	620
150500063	63	103	146	95	1	16	1050

90° Tee

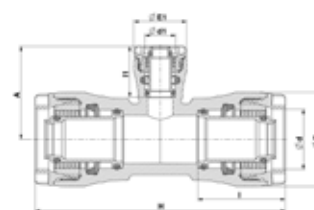
150400



Product Code	Size d	E	A	H	I	UB	UC	W
150400020	20	40	75	129	48			
150400025	25	47	82	142	53			
150400032	32	58	86	156	56	1	70	300
150400040	40	70	111	198	73	1	30	570
150400050	50	85	128	223	82	1	20	890
150400063	63	103	152	271	95	1	10	1510

90° Reducing Tee

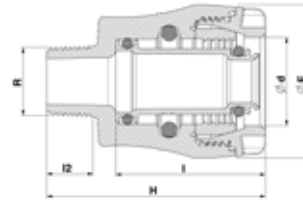
153400



Product Code	Size d	A	E	E1	H	I	L1	UB	UC	W
153400025020	25 x 20 x 25	77	47	41	142	52	49			
153400032020	32 x 20 x 20	78	58	41	156	56	49			
153400032025	32 x 25 x 32	85	58	47	156	56	53			
153400040032	40 x 32 x 40	95	70	58	198	73	56	1	40	490
153400050032	50 x 32 x 50	100	85	58	223	82	56	1	25	710
153400063032	63 x 32 x 63	102	103	58	271	95	56	1	15	1150

Male Adaptor

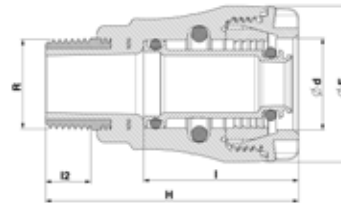
150200



Product Code	Size dxR	E	H	I	L2	UB	UC	W
150200020005	20 x 1/2"	40	73	48	17			
150200020007	20 x 3/4"	40	74	48	18			
150200025005	25 x 1/2"	47	79	51	17			
150200025007	25 x 3/4"	47	80	51	18			
150200025010	25 x 1"	47	82	51	20			
150200032010	32 x 1"	58	87	57	19	1	220	120
150200040013	40 x 1 1/4"	70	109	76	21	1	120	200
150200050015	50 x 1 1/2"	85	118	85	21	1	40	310
150200063020	63 x 2"	103	133	97	25	1	45	500

Male Adaptor with Threaded Brass Offtake

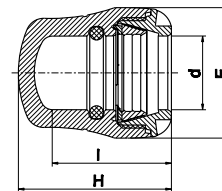
157200



Product Code	Size dxR	E	H	I	L2	UB	UC	W
157200020005	20 x 1/2"	40	70	48	13			
157200025007	25 x 3/4"	47	75	52	15			
157200032010	32 x 1"	58	95	57	17	1	150	180
157200040013	40 x 1 1/4"	70	117	76	19	1	80	320
157200050015	50 x 1 1/2"	85	126	85	19	1	60	450
157200063020	63 x 2"	103	144	97	23	1	35	710

End Cap Body for Gas

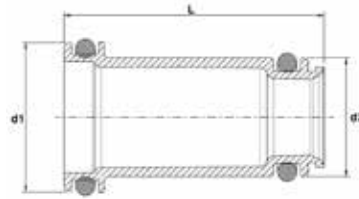
151200



Product Code	Size d	E	H	I	UB	UC	W
151200020	20	40	59	48			
151200025	25	47	65	52			
151200032	32	58	70	55	1	130	110
151200040	40	70	93	74	1	100	200
151200050	50	85	106	84	1	70	310
151200063	63	103	122	95	1	40	510

G-PLASS Liner

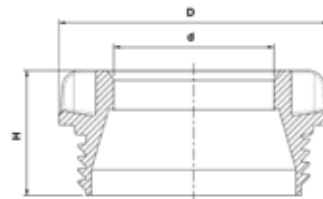
159511



Product Code	Size d	L	d1	d2	UB	UC	W
159511020P	20	55	20	13			
159511025P	25	45	25	18			
159511032P	32	55	31.7	25.0	20	920	10
159511040P	40	68	38.7	31.2	10	480	30
159511050P	50	76	48.9	39.3	5	240	50
159511063P	63	85	62.8	50.0	5	110	60

G-PLASS Nut

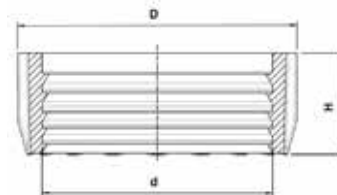
150040



Product Code	Size d	D	H	UB	UC	W
150040020P	20	22	25			
150040025P	25	26	26			
150040032P	32	56,4	26,2	50	900	20
150040040P	40	68,0	35,6	20	500	40
150040050P	50	82,5	41,4	10	300	70
150040063P	63	99,3	47,7	10	200	110

G-PLASS Split Ring

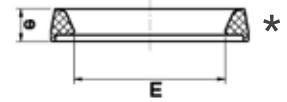
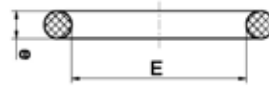
150030



Product Code	Size d	D	H	UB	UC	W
150030020P	20	29	14			
150030025P	25	34	15			
150030032P	32	44,1	15,8	50	2000	10
150030040P	40	53,1	21,5	50	1600	10
150030050P	50	66,0	25,5	50	500	20
150030063P	63	84,5	27,6	50	500	30

G-PLASS O-Ring/Shaped Seal

150020/100029



Product Code	Size d	E	e	UB	UC	W
150020020P	20	14	3.5			
150020025P	25	12	4			
150020032P	32	31	6			
150029040P*	40	38	10	50	4000	10
150029050P*	50	49	10	50	2500	10
150029063P*	63	61	11	50	2000	20

* Shaped Seal

G-PLASS Wrench

159900



Product Code	Size	UB	UC	W
15990002P	32-63		100	130

G-PLASS Integral Chamfer Tool

159600



Product Code	Size	UB	UC	W
159600063020	20-63		90	250

08019232

GPLASS

Trusted Gas Fitting



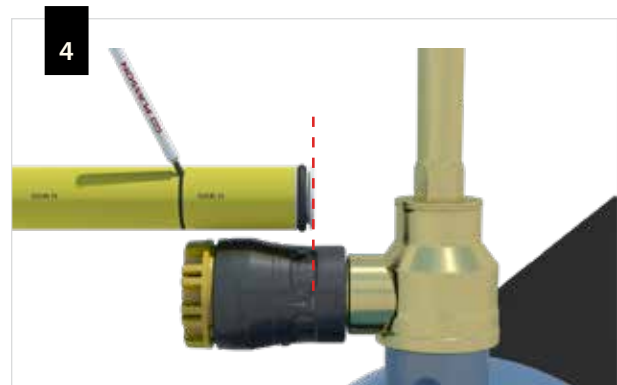
Instruction For Use



08019232

GPLASS

Trusted Gas Fitting



Instruction For Use

